



Differential Diagnosis of a Lytic Lesion from a Neolithic Skeleton from Suplacu de Barcău (Bihor County, Romania)

Claudia RADU^{1,2}, KIRÁLY Lajos¹

¹ Interdisciplinary Research Institute in Bio-Nano Sciences/Molecular Biology Center,
Cluj-Napoca,

² "Babeş-Bolyai" University Cluj-Napoca, Faculty of History and Philosophy.

THIRD ARHEOINVEST CONGRESS
Interdisciplinary Research in Archaeology
June 6th–8th, 2013
Iaşi, Romania



- Excavated by Florin Gogâltan and colleagues
- Suplacu de Barcău Neolithic Group
- Dated 5000 BC
- The skeleton was found inside the settlement

Sex: Male

determined using the morphological features of the *skull* (glabella, supraorbital margin, mental eminence) and of the *pelvis* (subpubic concavity, subpubic angle, ischiopubic ramus ridge, ventral arc, arc composé, greater sciatic notch, preauricular sulcus), all of these scored according to the Standards provided by Buikstra and Ubelaker (1994).

Age: 33-45

determined using the morphological features of the *pelvis* (pubic symphysis and auricular surface) and of the sternal ends of the *ribs*, scored according to the Standards provided by Buikstra and Ubelaker (1994).

Stature: calculated using formulae for the femur (maximum length=427 mm)

Pearson 1899: 158.166 cm

Trotter, Gleser 1958: 163.036 cm (SD=3.27 cm)

Breitinger 1937: 164.551 cm

Dental Pathologies

- Cavities: 4
- Abscesses: 5
- Teeth lost antemortem: 11
- Dental wear: ranging from 4 to 8 according to the scoring standards provided in the Data Collection Codebook (The Global History of Health Project), prepared by Steckel et al. 2011



Dental Pathologies

- Cavities: 4
- Abscesses: 5
- Teeth lost antemortem: 11
- Dental wear: ranging from 4 to 8 according to the scoring standards provided in the Data Collection Codebook (The Global History of Health Project), prepared by Steckel et al. 2011



Dental Pathologies

- Cavities: 4
- Abscesses: 5
- Teeth lost antemortem: 11
- Dental wear: ranging from 4 to 8 according to the scoring standards provided in the Data Collection Codebook (The Global History of Health Project), prepared by Steckel et al. 2011



Dejenerative Joint Disease



Dietary Pathologies



Fractures



Fractures



Fractures



DISH (Diffuse Idiopathic Skeletal Hyperostosis)



DISH (Diffuse Idiopathic Skeletal Hyperostosis)



DISH (Diffuse Idiopathic Skeletal Hyperostosis)



Lytic Lesions on the Calcanei



Lytic Lesions on the Calcanei



22337 - L:52267

0.54

Osteomyelitis



Ortner 2003: 185

Osteomyelitis



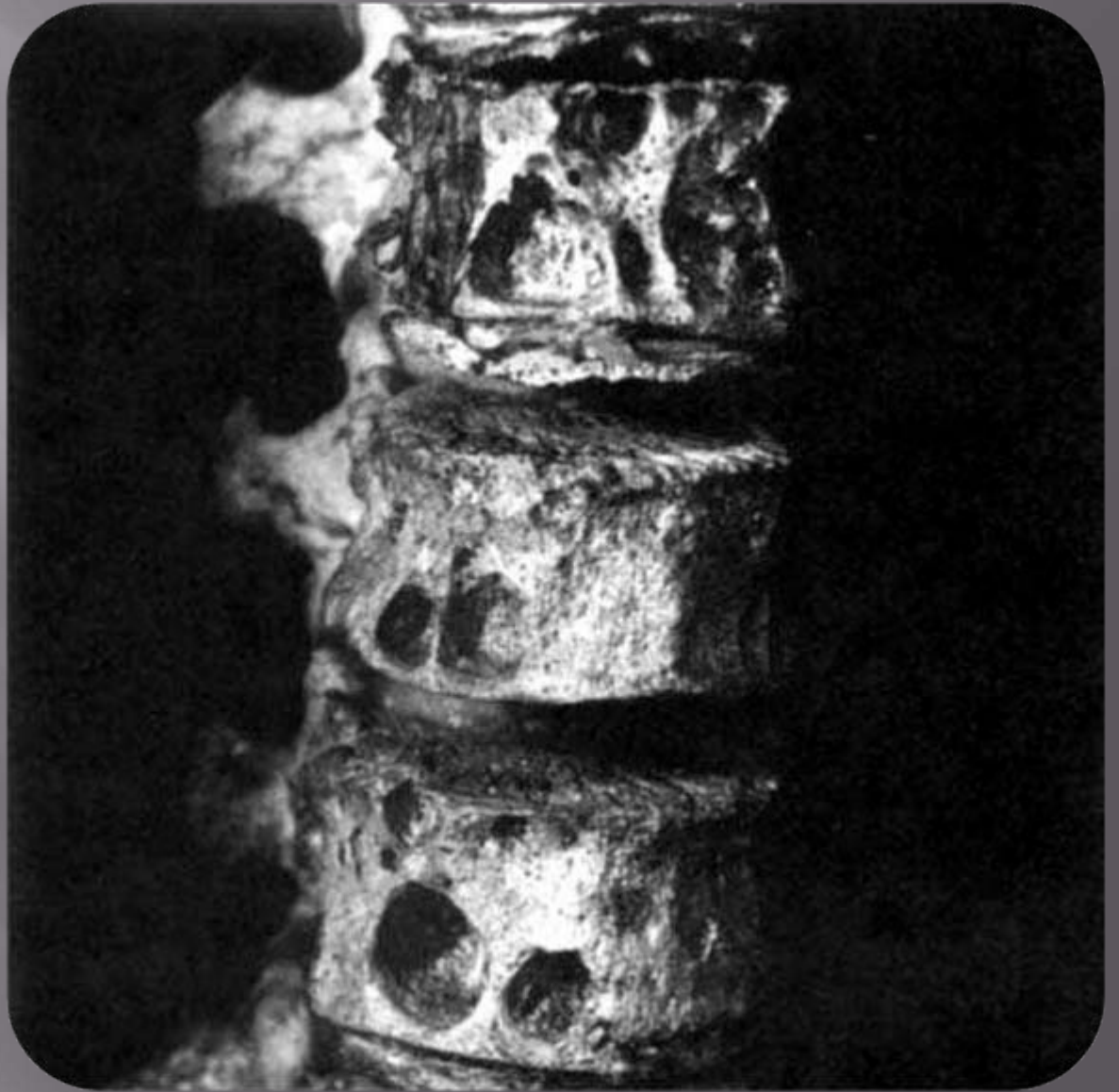
Ortner 2003: 198

Osteomyelitis



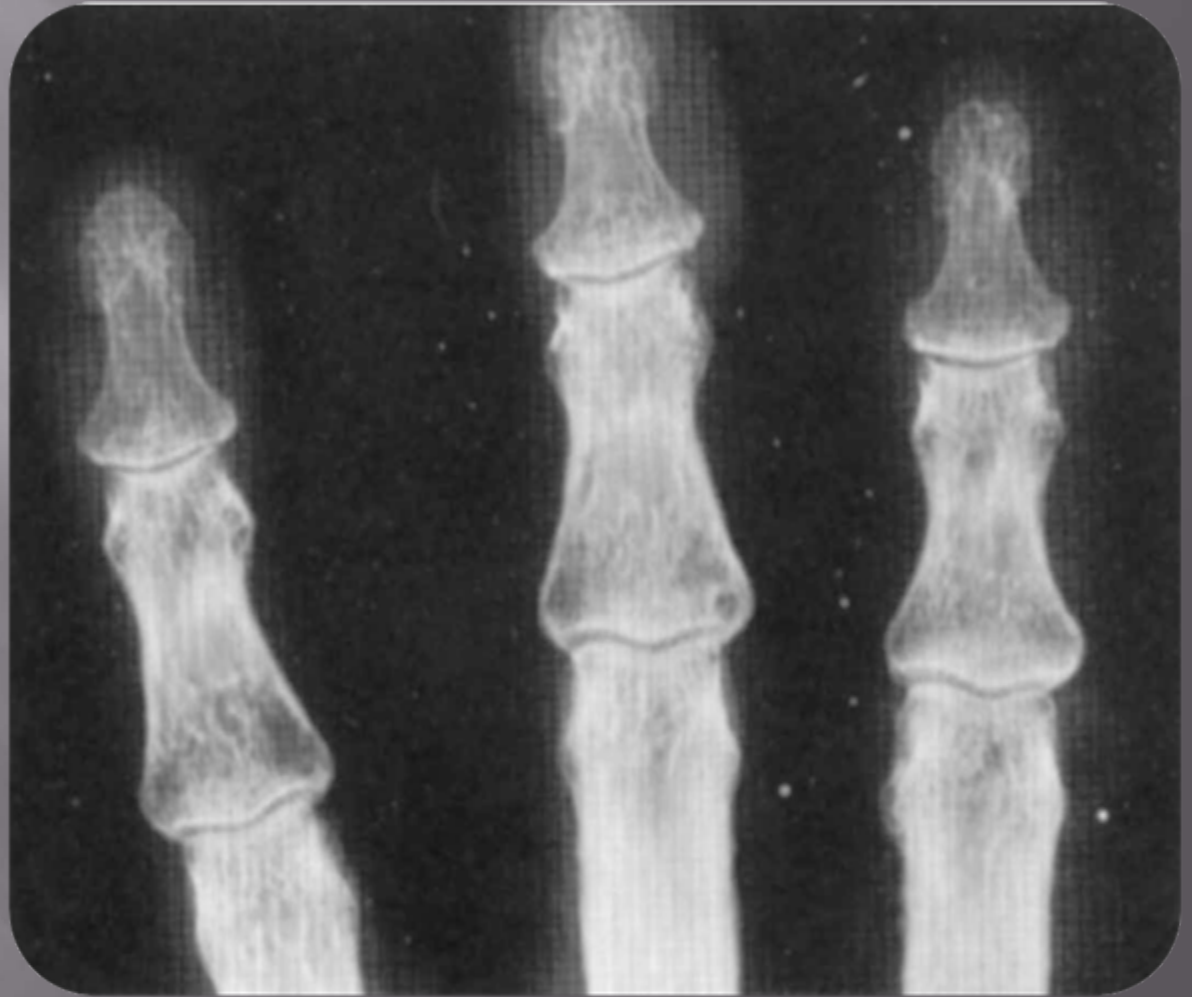
Ortner 2003: 194

Brucellosis



Ortner 2003: 219

Diabetes mellitus



Michiko Sakai et al. 1986: 57

Diabetes mellitus → DISH → Peripheral
Neuropathy → *S. aureus* Infection →
Osteitis/Osteomyelitis

Thank you for your attention!

The research was accomplished in the framework
of PCCA_1153/2012 project granted by the Romanian
National University Research Council